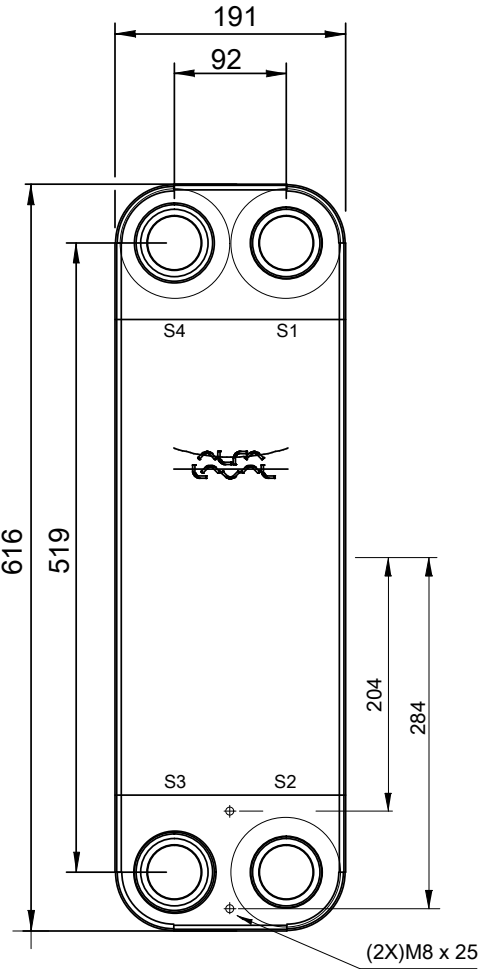
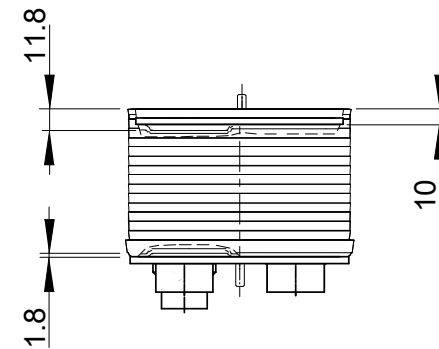
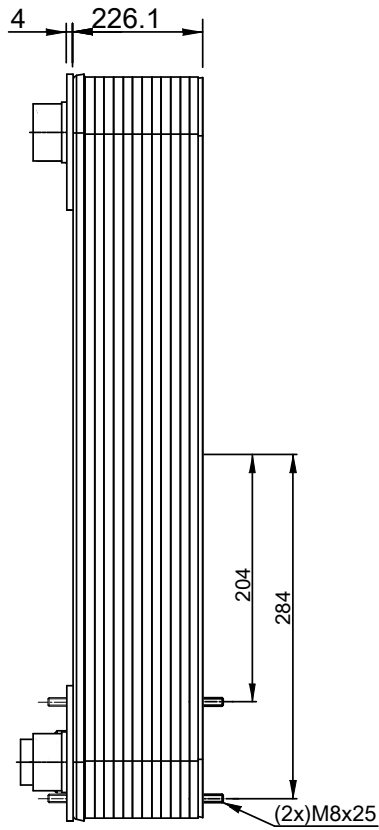
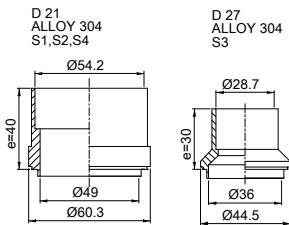


Note that all unique customer requirements (i.e tolerance) need to be verified thru Alfa Laval.



T1 T2 T3 T4 locations on back side correspond to S1 S2 S3 S4 on front side

HEATING SURFACE m²
 NETWEIGHT 42.5 kg
 OPERATING WEIGHT kg
 PLATE MATERIAL ALLOY 316
 PLATE GROUPING 1*50AMH/1*51AML

ALL DIMENSIONS IN MILLIMETERS

SIDE	MEDIA	INLET	TEMP. °C	OUTLET	TEMP. °C	FLOW RATE	PRESSURE DROP	LIQUID VOL.
1	Water	S1	°C	S2	°C	kg/h	kPa	10.2 dm ³
2	R134a	S3	°C	S4	°C	kg/h	kPa	8.0 dm ³

PRESSURE VESSEL APPROVAL PED

ACH220EQ-102AM-F (3287118802)

www.alfalaval.com

CUSTOMER NAME / REF. NO.

COMPANY / REF.
 HDR PRODUCTS
 HDR PRODUCTS Q210259

TOTAL LENGTH 289 mm
 TOTAL WIDTH 191 mm
 TOTAL HEIGHT 616 mm



10/14/2021
 REV 0